



2019 QASHQAI®

Innovation that excites

NISSAN INTELLIGENT MOBILITY™

Nissan Intelligent Mobility guides everything we do. We're using new technologies to transform cars from mere driving machines into partners. Together the journey is more confident, connected, and exciting. Whether it's cars that share the task of driving with you, or highways that charge your EV as you go along, it's all in the very near future. And it's a future already taking shape in the Nissan you drive today.



¹Intelligent Emergency Braking cannot prevent all collisions and may not provide warning or braking in all conditions. Driver should monitor traffic conditions and brake as needed to prevent collisions. See Owner's Manual for safety information. ²Available feature. ³Provincial laws may apply. Review before using. ⁴Intelligent Cruise Control uses limited braking and is not a collision avoidance or warning system. Driver should monitor traffic conditions and brake as needed to prevent collisions. See Owner's Manual for safety information. ⁵Availability of features vary by vehicle model year, model, trim level, packaging, and options. ⁶ProPILOT Assist cannot prevent collisions. It is the driver's responsibility to be in control of the vehicle at all times. Always monitor traffic conditions and keep both hands on the steering wheel. System operates only when lane markings are detected. Does not function in all weather, traffic, and road conditions. System has limited control capability and the driver may need to steer, brake, or accelerate at any time to maintain safety. See Owner's Manual for safety information. ⁷Intelligent Emergency Braking with Pedestrian Detection cannot prevent all collisions and may not provide warning or braking in all conditions. Driver should monitor traffic conditions and brake as needed to prevent collisions. See Owner's Manual for safety information. ⁸Blind Spot Warning cannot prevent collisions and may not detect every object or warn in all situations. Driver should always turn and look before changing lanes. See Owner's Manual for safety information. ⁹Rear Cross Traffic Alert may not detect all vehicles. See Owner's Manual for safety information. ¹⁰Lane Departure Warning and Intelligent Lane Intervention operate only when lane markings are able to be detected. See Owner's Manual for safety information. ¹¹Feature availability is dependent on vehicle model, trim level, packaging and options. Compatible connected device may be required and feature availability may be dependent on device's capability. Refer to connected device's Owner's Manual for details. Late availability for some features. **Driving is serious business and requires your full attention.** Only use features and connected devices when safe and legal to do so. Some features, including automatic crash notification and SOS, are dependent upon the telematics device being in operative condition, its ability to connect to a wireless network, compatible wireless network availability, navigation map data and GPS satellite signal receptions, the absence of which can limit or prevent the ability to reach Customer Care or receive support. GPS mapping may not be detailed in all areas or reflect current road status. Never program GPS while driving. Only use Remote Engine Start and Remote Horn features in accordance with any laws, rules or ordinances in effect in your vehicle's location. Some services and features are provided by independent companies not within Nissan's control. **Should service provider terminate or restrict service or features, service or features may be suspended or terminated without notice or with no liability to Nissan or its partners or agents.** Services and features may require compatible cellular network provided by independent companies not within Nissan or its partners' or agents' control. Cellular network signal strength may vary and may not be available in all areas or at all times. Services and features may not function if cellular network is unavailable, restricted, or terminated. Nissan and its partners or agents are not responsible for associated costs or other third party charges that may be required for continued operation due to cellular network unavailability, restriction, or termination (including equipment replacements/upgrades, if available, or roaming charges on alternative networks). Technology is evolving, and changes by independent companies are not within Nissan's or its partners' or agents' control. Enrollment, owner consent, personal identification number (PIN), and subscription agreement may be required to receive full suite of features and services. Trial periods (if applicable) begin on the date of vehicle purchase or lease of a new Nissan. Trial periods may be subject to change at any time and may be subject to early termination without notice. Required subscriptions may be sold separately for each available feature or service after trial period ends, and may continue until you call service provider to cancel. Installation costs, one-time activation fee, other fees and taxes may apply. Fees and programming subject to change. Feature may be subject to age restrictions in some areas. Subscriptions governed by service provider's subscription agreement, terms and conditions and privacy statements available at service provider's website. Text rates or data usage may apply. The Nissan names, logos and slogans are trademarks owned by or licenced to Nissan Motor Co. Ltd. or its North American subsidiaries. Other trademarks and trade names are those of their respective owners. **For important safety information, system limitations, and additional operating and feature information, see Dealer or Owner's Manual.** ¹²Availability of specific features is dependent upon the phone's Bluetooth® support. Please refer to your phone Owner's Manual for details. Bluetooth® word mark and logos are owned by Bluetooth SIG, Inc., and any use of such marks by Nissan is under licence. ¹³XM® and SiriusXM® Satellite Radio is available in the 10 Canadian provinces and the 48 contiguous United States. Subscription sold separately after trial period. All subscriptions subject to customer agreement at siriusxm.ca/terms. All fees and programming subject to change. ©2019 Sirius XM Canada Inc. The Sirius®, XM®, and SiriusXM® names and all related marks and logos are trademarks of Sirius XM Radio Inc. All other trademarks are the property of their respective owners. ¹⁴Driving is serious business and requires your full attention. If you have to use the connected device while driving, exercise extreme caution at all times so full attention may be given to vehicle operation. ¹⁵Cargo shown for display purposes only. Cargo and load capacity limited by weight and distribution. Always secure cargo. Heavy loading of the vehicle with cargo, especially on the roof, will affect the handling and stability of the vehicle. ¹⁶Intelligent Around View Monitor cannot eliminate blind spots and may not detect every object. Driver should always turn and check surroundings before driving. See Owner's Manual for safety information. ¹⁷Virtual composite 360° view. ¹⁸Extra cost option. ¹⁹See your Nissan Dealership and read the actual limited warranty. ²⁰Whichever occurs first. ²¹Intelligent Trace Control cannot prevent collisions or loss of control. Driver should remain in control of vehicle at all times. See Owner's Manual for safety information. ²²Driving is serious business and requires your full attention. If you have to use the feature while driving, exercise extreme caution at all times so full attention may be given to vehicle operation. ²³Information displayed is dependent on how vehicle is equipped. ²⁴Use Hands Free Text Messaging when parked in a safe location. If you must use while driving, monitor traffic conditions and keep both hands on the steering wheel to prevent collisions. Compatible device required. Message and data rates may apply. ²⁵RearView Monitor may not detect every object and does not eliminate blind spots or warn of moving objects. See Owner's Manual for safety information. ²⁶See Owner's Manual for safety information. ²⁷Vehicle Dynamic Control cannot prevent collisions due to abrupt steering, carelessness, or dangerous driving techniques. It should remain on when driving, except when freeing the vehicle from mud or snow. See Owner's Manual for safety information. ²⁸Tire Pressure Monitoring System is not a substitute for regular tire pressure checks. See Owner's Manual for safety information. ²⁹Vehicle must be on for the Easy-Fill Tire Alert to operate. ³⁰Airbags are only a supplemental restraint system. Always wear your seat belt. Rear-facing child restraints should not be placed in the front-passenger's seat. All children 12 and under should ride in the rear seat properly secured in child restraints, booster seats, or seat belts according to their size. Airbags will only inflate in certain accidents. See Owner's Manual for safety information. ³¹Rear Intelligent Emergency Braking cannot prevent all collisions and may not provide warning or braking in all conditions. Driver should monitor traffic conditions and brake as needed to prevent collisions. See Owner's Manual for safety information. ³²Sonar System may not detect every object. Driver should always check surroundings before driving. See Owner's Manual for safety information. ³³Never program while driving. GPS mapping may not be detailed in all areas or reflect current road status. ³⁴Xtronic CVT models only. ³⁵Brake Assist cannot prevent all collisions and may not provide warning or braking in all conditions. Driver should monitor traffic conditions and brake as needed to prevent collisions. See Owner's Manual for safety information. Android Auto™, Google Assistant™ and Google Maps™ are trademarks of Google LLC. Apple CarPlay® is a registered trademark of Apple, Inc. Bluetooth® is a registered trademark of Bluetooth SIG, Inc. Facebook® is a registered trademark of Facebook, Inc. HomeLink® is a registered trademark of Gentex Corporation. Instagram® is a registered trademark of Instagram, LLC. iPhone® is a registered trademark of Apple, Inc. All rights reserved. iPhone® or other external device not included. Siri® and Siri® Eyes Free are registered trademarks of Apple, Inc. The Sirius®, XM®, and SiriusXM® names and all related marks and logos are trademarks of Sirius XM Radio Inc. All other trademarks are the property of their respective owners. Twitter® is a registered trademark of Twitter, Inc. YouTube® is a registered trademark of Google LLC. All illustrations, photographs and specifications in this brochure are based on the latest product information. See actual vehicle for complete accuracy. Nissan Canada Inc. reserves the right to make changes at any time, without notice, in prices, colours, materials, equipment, specifications and models, and to discontinue models or equipment. For information on additional options and accessories, contact your Nissan Dealership. Registered trademarks are property of their respective owners. At nissan.ca, you'll find a way to "build your own Nissan," a dealer locator, and more information about key Nissan support services. The Nissan names, logos, product names, feature names, and slogans are trademarks owned by or licenced to Nissan Motor Co. Ltd. and/or its North American subsidiaries. **Always wear your seat belt, and please drive responsibly.** Printed in December 2018. Catalogue number: 99999-QAS19EN. ©2018 Nissan Canada Inc. All rights reserved.

visit nissan.ca



Conquer the city with progressive style, a commanding point of view, and advanced safety tech like Intelligent Emergency Braking.¹ Merge into traffic with confidence. Let no pothole, street-parking-only restaurant, or imposing rain cloud keep you from where you want to be. The 2019 Nissan Qashqai.[®] Tech that moves you.

SMART PREMIUM

The intuitively laid-out Qashqai® interior is designed to keep up with your life, while generous head and leg room keep the crew happy on longer trips. And thoughtful details, like stitching on the seats and doors, give the space a handcrafted feel.

Nissan Qashqai® SL AWD shown in Light Grey Leather.

Leather-appointed
Seats²

Sporty D-shaped Heated
Steering Wheel²

Quick Comfort®
Heated Front Seats

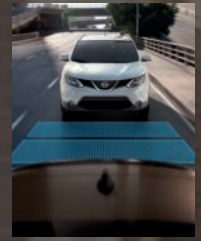
Nissan Intelligent Key®
with Remote Engine
Start System^{2,3}

Power Sliding
Moonroof²

STREET-SAVVY, ADVENTURE-READY

INTELLIGENT CRUISE CONTROL

Keep pace with the flow of traffic with just the push of a button. Unlike traditional systems that only maintain a set speed, Intelligent Cruise Control also helps maintain an adjustable set distance between you and the car in front of you. As traffic slows down or speeds up, Qashqai® can respond accordingly.^{2,4}



INTELLIGENT ALL-WHEEL DRIVE

Intelligent All-Wheel Drive is so responsive, it can adapt to changing conditions 30 times faster than the blink of an eye. Snow, rain-covered pavement, or tight turns, the system automatically sends power to the wheels that need it most.²



ECO MODE AND SPORT STEERING

Qashqai gives you the power to switch things up. Low on gas and late for work? Eco Mode adjusts engine and transmission response to maximize fuel efficiency. And for those days you just want to play, activating sport steering sharpens steering response to rev up your senses.

COLD-WEATHER FEATURES



QUICK COMFORT® HEATED FRONT SEATS
Standard Quick Comfort® heated front seats not only take the edge off a chilly morning, they feel great on your back in any weather.



HEATED STEERING WHEEL
Gone are the days of leaving your gloves on in the car, thanks to the heated steering wheel.²

REMOTE ENGINE START SYSTEM WITH INTELLIGENT CLIMATE CONTROL

On hot days, the Remote Engine Start System with Intelligent Climate Control can adjust temperature and airflow for a quick cool-down.^{2,3}

On cold days, the system can adjust airflow to warm up the cabin, defrost windows and windshield, and even turn on the heated steering wheel and outside mirrors.^{2,3}



U.S. instrumentation shown.

A BOLDER RIDE THROUGH LIFE

Nissan Intelligent Mobility transforms your Qashqai® into a responsive partner, for a more connected, confident, and thrilling drive.⁵

ProPILOT Assist

Feel free to let go of driving stress. With Nissan ProPILOT Assist, Qashqai helps out with daily driving – following the car ahead at a preset distance or helping keep you centred in your lane. It can even bring your Qashqai to a full stop based on the traffic flow, and can bring you back up to speed when traffic starts moving again.^{2,6}

Intelligent Emergency Braking with Pedestrian Detection

Monitors your speed and distance between you and the car ahead, and can let you know if you need to slow down. It can even automatically engage the brakes to help avoid a frontal collision or lessen the severity of an impact. And when it detects a pedestrian in the crosswalk, it can stop you in your tracks.^{2,7}

Blind Spot Warning

Helps you change lanes with confidence. It keeps an eye on the blind spot area and gives you a heads-up if it detects a vehicle hiding there.^{2,8}

Rear Cross Traffic Alert

Helps you back out of a space with more confidence. It watches around the rear of your Qashqai, and can warn you about cars it detects creeping up on you from either side.^{2,9}

Lane Departure Warning/Intelligent Lane Intervention

Lane Departure Warning helps make sure you change lanes only when you mean to. If the system detects that you're unintentionally drifting over, it'll give you a heads-up. When lane markings are clear, Intelligent Lane Intervention detects if you're straying out of your lane and taps the brakes to help gently guide you back.^{2,10}



CALM, COOL, CONNECTED

NissanConnect® with Navigation and Services featuring Apple CarPlay® and Android Auto™ works seamlessly with your compatible smartphone and Qashqai's 178 mm (7") colour touch-screen.^{2,11,12,13}

U.S. instrumentation shown.



People to see? Places to be? Just ask Siri.® Equipped with Siri, Apple CarPlay® brings on board your contacts, favourite audio apps, Apple Maps, and more. You can even use your steering wheel controls to adjust volume and toggle through screens. Simply plug in your compatible iPhone® and go.^{11,14}

android auto

Know where you're going and when. Google Maps™ helps you navigate to your next appointment, while Google Assistant keeps you on top of your schedule. Choose a song, change your destination, or respond to a text with your hands on the wheel using the hundreds of available voice commands.^{11,14}

DIVIDE-N-HIDE®

Reversible cargo-floor panels adjust easily to provide multiple configurations, while the back seats fold down flat to accommodate larger gear, giving you space for your daily essentials and weekend getaways.¹⁵



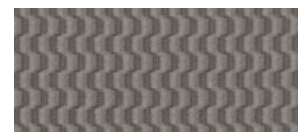
INTELLIGENT AROUND VIEW® MONITOR

Squeeze into that spot with your pride and rims intact. The Intelligent Around View Monitor uses four cameras to give you a virtual composite, 360° bird's-eye view of your vehicle, with selectable split-screen close-ups of the front, rear, and curbside views.^{2,16,17}

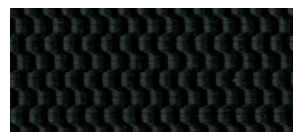
U.S. model shown.



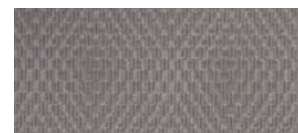
PAINT AND FABRIC



Light Grey Cloth
S



Charcoal Cloth
S



Light Grey Cloth
SV



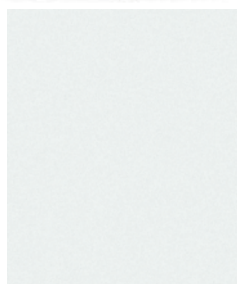
Charcoal Cloth
SV



Light Grey Leather
SL



Charcoal Leather
SL



Glacier White QAK

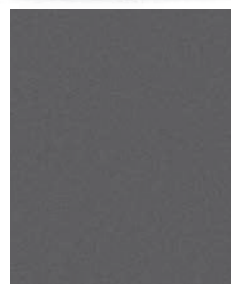


Pearl White¹⁸ QAB

	S	SV	SL	S	SV	SL
LIGHT GREY CLOTH						
LIGHT GREY LEATHER						
CHARCOAL CLOTH	■				■	
CHARCOAL LEATHER						■

■ Standard

Nissan has taken care to ensure that the colour swatches presented here are the closest possible representations of actual vehicle colours. Swatches may vary slightly due to the printing process and whether viewed in daylight, fluorescent or incandescent light. Please see the actual colours at your dealer.



Gun Metallic¹⁸ KAD



Monarch Orange¹⁸ EBB



Scarlet Ember¹⁸ NBL



Nitro Lime¹⁸ EBA



Caspian Blue¹⁸ RBY



Magnetic Black¹⁸ G41

	S	SV	SL	S	SV	SL	S	SV	SL	S	SV	SL	S	SV	SL	S	SV	SL
Gun Metallic																		
Monarch Orange																		
Scarlet Ember																		
Nitro Lime																		
Caspian Blue																		
Magnetic Black																		

GENUINE NISSAN ACCESSORIES

Every Genuine Nissan Accessory is: custom-fit, custom-designed and durability-tested; available for finance and backed by Nissan's 3 year/60,000 km Accessories limited warranty when installed by dealer at time of your vehicle purchase.¹⁹

A. 17" Aluminum-alloy Wheels

Cruise with some attitude.

B. Chrome Rear Bumper Protector

Helps protect bumper from nicks and scratches.

C. Roof Rail Crossbars¹⁵

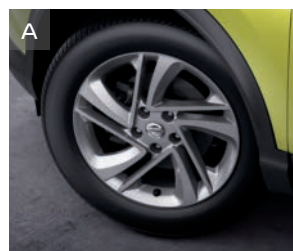
Transfer the weight from your shoulders to your roof.

D. Chrome Door Side Sill Strips

The stylish way to protect against dings.

Additional Accessories:

- All-season Floor Mats
- LED Fog Lights
- Illuminated Kick Plates
- Interior Accent Lighting
- Front Lip Finisher
- Rear Glass Finisher
- Frameless Auto-dimming Rear View Mirror with Universal Remote
- Frameless Prizm Rear View Mirror with Universal Remote
- And More



BUYING AND OWNING

Finance Options Through Nissan Canada Finance, we offer many attractive lease and loan options that can be tailored to your individual needs. We have unique programs such as the Nissan Grad Program, Loyalty Program or the Nissan Advantage Program. Please visit our website Nissan.ca/finance to explore all of the options available. We have also made it easy to pre-qualify online. All of our programs come with competitive rates and terms. With our flexible options, driving home a new Nissan has never been easier. Consult your local Nissan Dealership for complete details.

No-Nonsense Warranty Every 2019 Nissan is covered by a 3 year/60,000 km²⁰ Comprehensive New Vehicle Warranty, a 5 year/100,000 km²⁰ Powertrain Warranty, an 8 year/130,000 km²⁰ Emission Control Warranty on selected components, and a 5 year/unlimited km Corrosion Perforation Warranty. As a Nissan owner, you'll also receive a 3 year Roadside Assistance program available to you 24 hours a day. Terms, conditions and exclusions apply. See your Warranty Information Booklet for complete details.

Added Security Plan (ASP) For ultimate peace of mind, consider the Nissan Added Security Plan. It's our commitment to be there for you, and to help you leave your worries behind. Different plans, available for both purchased and leased vehicles, let you tailor the coverage to your driving habits.

Security+Plus™ Prepaid Maintenance Plan The smart choice when it comes to maintaining your new Nissan. Honoured at all participating Nissan Dealers in Canada and the U.S., your vehicle is cared for by factory-trained technicians using Genuine Nissan Parts. And best of all, there's no worrying about price increases on parts or service in the future. A variety of plans are available. Ask your Dealer for details.

See your Nissan dealer for details, or go to accessories.nissan.ca



CHOOSE YOUR TRIM LEVEL

S MANUAL TRANSMISSION

- 2.0-litre DOHC 16-valve 4-cylinder engine
- 6-speed manual transmission
- Electronic parking brake
- Front-Wheel Drive (FWD)
- Intelligent Ride Control
- Intelligent Trace Control²¹
- 16" Steel wheels with wheel covers
- P215/65R16 all-season tires
- LED Daytime Running Lights
- Apple CarPlay^{®11}
- Android Auto^{™11}
- Rear spoiler
- Power heated outside mirrors with LED turn signal indicators
- Advanced Drive-Assist[®] Display^{22,23}
- Divide-N-Hide[®] Cargo System¹⁵
- Intelligent Emergency Braking¹
- Blind Spot Warning⁸
- Rear Cross Traffic Alert⁹
- Siri[®] Eyes Free¹¹
- Hands-free Text Messaging Assistant²⁴
- Bluetooth[®] Hands Free Phone System and streaming audio^{11,12}
- RearView Monitor²⁵
- Integrated key with remote keyless entry
- Tilt and telescoping steering column
- Illuminated steering wheel-mounted controls
- Variable intermittent front and intermittent rear windshield wipers
- Rear Door Alert²⁶
- 12-volt DC power outlet
- Six cargo tie-down hooks¹⁵
- Cargo cover
- 6-way manual driver's seat
- Quick Comfort[®] heated front seats
- 60/40 2nd-row split folding seat
- Cloth seat trim
- NissanConnect[®] 170 mm (7") touch-screen display^{11,12,13}
- Two USB ports¹⁴
- Vehicle Dynamic Control (VDC)²⁷ with Traction Control System (TCS)
- Tire Pressure Monitoring System (TPMS) with Easy-Fill Tire Alert^{28,29}
- Nissan Advanced Airbag System³⁰



S CVT INCLUDES S MANUAL TRANSMISSION EQUIPMENT PLUS:

- Xtronic CVT[®] (Continuously Variable Transmission) with manual shift mode
- Available Intelligent All-Wheel Drive (AWD)
- 17" Aluminum-alloy wheels
- P215/60R17 all-season tires
- Intelligent Engine Brake
- Cruise control with steering wheel-mounted controls
- Foot-style parking brake



SV CVT INCLUDES S CVT EQUIPMENT PLUS:

- Available Intelligent All-Wheel Drive (AWD)
- Intelligent Emergency Braking with Pedestrian Detection⁷
- Power sliding glass moonroof with one-touch open/close and tilt feature
- Remote Engine Start System with Intelligent Climate Control⁵
- Dual Zone Automatic Temperature Control
- Heated leather-wrapped steering wheel
- Leather-wrapped shift knob
- SiriusXM[®] Radio with 3-month complimentary trial access^{11,13}
- Lane Departure Warning and Intelligent Lane Intervention¹⁰
- High Beam Assist
- Rear Intelligent Emergency Braking³¹
- Rear Sonar System³²
- Nissan Intelligent Key[®] with Push Button Ignition
- Intelligent Auto Headlights



SL INCLUDES SV CVT EQUIPMENT PLUS:

- Intelligent All-Wheel Drive (AWD)
- 19" Aluminum-alloy wheels
- P225/45R19 all-season tires
- Intelligent Cruise Control⁴
- Roof rails¹⁵
- ProPILOT Assist⁶
- Electronic Parking Brake
- Nissan Navigation System³³
- Nissan Voice Recognition for audio and navigation³³
- SiriusXM[®] Traffic and Travel Link[®] with 3-month complimentary trial access^{11,13}
- Intelligent Around View[®] Monitor¹⁶
- 8-way power driver's seat, including 2-way lumbar support
- Leather-appointed seats
- Front seatback pockets

KEY AVAILABLE PACKAGE:

- Platinum Package



SL PLATINUM PACKAGE INCLUDES SL EQUIPMENT PLUS:

- LED headlights
- 9-speaker Bose[®] Premium Audio System
- NissanConnect[®] Services powered by SiriusXM[®] with complimentary trial access to 3-year Select and 6-month Premium Plus packages^{11,12,13}
- Auto-dimming Inside Mirror with HomeLink[®] universal garage-door opener



SPECIFICATIONS

Engine	S	SV	SL
2.0-litre DOHC 16-valve 4-cylinder	■	■	■
— Horsepower – 141 HP @ 6000 rpm			
— Torque – 147 lb.-ft. @ 4400 rpm			
Continuously Variable Valve Timing Control System (CVTCS) on intake and exhaust valves	■	■	■
Nissan Direct Ignition System with platinum-tipped spark plugs	■	■	■
Eco Mode	■	■	■

Drivetrain	S	SV	SL
Front-Wheel Drive (FWD)	■	■	
Intelligent All-Wheel Drive (AWD) ³⁴	□	□	■
Hill Start Assist	■	■	■
6-speed manual transmission	■		
Xtronic CVT® (Continuously Variable Transmission) with manual shift mode	□	■	■

Brakes	S	SV	SL
4-wheel vented disc brakes	■	■	■
4-wheel Anti-lock Braking System (ABS)	■	■	■
Electronic Brake force Distribution (EBD)	■	■	■
Brake Assist ³⁵	■	■	■
Intelligent Trace Control ²¹	■	■	■
Intelligent Engine Brake	■ ³⁴	■	■
Intelligent Ride Control	■	■	■
Foot-style parking brake	■ ³⁴	■	
Electronic parking brake	■		■

Suspension/Chassis Bracing/Steering	S	SV	SL
Independent strut front suspension	■	■	■
Independent multi-link rear suspension	■	■	■
Front and rear stabilizer bars	■	■	■
Electronic power steering with Sport Mode	■	■	■

Wheels/Tires	S	SV	SL
16" x 6.5" steel wheels with wheel covers	■		
17" x 7.0" aluminum-alloy wheels	■ ³⁴	■	
19" x 7.0" aluminum-alloy wheels			■
P215/65R16 all-season tires	■		
P215/60R17 all-season tires	■ ³⁴	■	
P225/45R19 all-season tires			■

Exterior Features	S	SV	SL
LED Daytime Running Lights	■	■	■
Halogen headlights with LED signature	■	■	■
LED headlights			P
Automatic on/off headlights		■	■
Fog lights		■	■
Power heated outside mirrors with LED turn signal indicators	■	■	■
Roof rails			■
Rear spoiler	■	■	■
Black wheel arch mouldings and rocker panels	■	■	■
Power Sliding Moonroof with one-touch open/close and tilt feature		■	■

■ Standard □ Optional P Part of SL Platinum Package

Comfort/Convenience	S	SV	SL
Advanced Drive-Assist® Display ^{22,23}	■	■	■
Nissan Navigation System ³³			■
NissanConnect® Services powered by SiriusXM® with complimentary trial access to 3-year Select and 6-month Premium Plus packages ^{11,12,13}			P
NissanConnect 170 mm (7") touch-screen display ^{11,12,13}	■	■	
NissanConnect 170 mm (7") touch-screen display and Voice Recognition for navigation and audio ^{11,12,13,33}			■
SiriusXM® Traffic and Travel Link® with 3-month complimentary trial access ^{11,13}			■
Auto-dimming Inside Mirror with HomeLink® universal garage-door opener			P
Siri® Eyes Free ¹¹	■	■	■
Hands-free Text Messaging Assistant ²⁴	■	■	■
Bluetooth® Hands Free Phone System ^{11,12}	■	■	■
RearView Monitor ²⁵	■	■	■
Apple CarPlay® ¹¹	■	■	■
Android Auto™ ¹¹	■	■	■
Intelligent Around View® Monitor ¹⁶			■
Dual Zone Automatic Temperature Control		■	■
Rear seat heating/cooling vents	■ ³⁴	■	■
Power windows with driver's one-touch auto-up/down feature	■	■	■
Power door locks with auto-locking feature	■	■	■
Integrated Key with remote keyless entry	■		
Nissan Intelligent Key® with Push Button Ignition		■	■
Remote Engine Start System with Intelligent Climate Control ²		■	■
High Beam Assist		■	■
Rear Sonar System ³²		■	■
Rear Door Alert ²⁶	■	■	■
Tilt and telescoping steering column	■	■	■
Illuminated steering wheel-mounted controls	■	■	■
Cruise control	■ ³⁴	■	■
Intelligent Cruise Control ⁴			■
Variable intermittent windshield wipers	■	■	■
Intermittent rear window wiper	■	■	■
12-volt DC power outlet	■	■	■
Sun visors with vanity mirrors and extensions	■	■	■
Dual illuminated visor vanity mirrors		■	■
Overhead map lights	■	■	■
Overhead sunglasses storage	■	■	■
Front centre console	■	■	■
Rear-seat centre armrest		■	■
Front seatback pockets			■
Four cup holders and four bottle holders		■	■
Six cargo tie-down hooks ¹⁵	■	■	■
Divide-N-Hide® Cargo System ¹⁵	■	■	■
Cargo cover	■	■	■

Seating/Appointments	S	SV	SL
6-way manual driver's seat	■	■	
8-way power driver's seat, including 2-way lumbar support			■
4-way manual front-passenger's seat	■	■	■
60/40 2nd-row split folding seat	■	■	■
Cloth seat trim	■	■	
Leather-appointed seats			■
Quick Comfort® heated front seats	■	■	■
Heated leather-wrapped steering wheel		■	■
Leather-wrapped shift knob		■	■

Audio/Entertainment	S	SV	SL
AM/FM/CD audio system with 178 mm (7") colour display with multi-touch control	■	■	■
9-speaker Bose® Premium Audio System			P
Four speakers	■		
Six speakers		■	■
MP3/WMA CD playback capability	■	■	■
Auxiliary audio input jack ¹⁴	■	■	■
Two USB ports ¹⁴	■	■	■
Streaming audio via Bluetooth® wireless technology ^{11,12}	■	■	■
SiriusXM® Radio with 3-month complimentary trial access ^{11,13}		■	■
Radio Data System (RDS)	■	■	■
Speed-sensitive volume control	■	■	■
Illuminated steering wheel-mounted audio controls	■	■	■

Safety/Security	S	SV	SL
Nissan Advanced Airbag System with dual-stage supplemental front airbags with occupant-classification sensors ³⁰	■	■	■
Driver and front-passenger seat-mounted side-impact supplemental airbags ³⁰	■	■	■
Roof-mounted curtain supplemental airbags with rollover sensor for side-impact head protection for front and rear-seat outboard occupants ³⁰	■	■	■
Vehicle Dynamic Control (VDC) ²⁷ with Traction Control System (TCS)	■	■	■
Rear Intelligent Emergency Braking ³¹		■	■
Intelligent Emergency Braking ¹	■		
Intelligent Emergency Braking with Pedestrian Detection ⁷		■	■
ProPILOT Assist ⁶			■
Blind Spot Warning ⁸	■	■	■
Rear Cross Traffic Alert ⁹	■	■	■
Lane Departure Warning and Intelligent Lane Intervention ¹⁰		■	■
3-point ELR driver and passenger seat belt system	■	■	■
LATCH System (Lower Anchors and Tethers for Children)	■	■	■
Tire Pressure Monitoring System (TPMS) with Easy-Fill Tire Alert ^{28,29}	■	■	■

PACKAGE

- SL Platinum Package
- LED Headlights • 9-speaker Bose® Premium Audio System • NissanConnect® Services powered by SiriusXM®^{11,12,13} • Auto-dimming Inside Mirror with HomeLink® universal garage-door opener

CAPACITIES/FUEL

Capacities	
Seating capacity	5
Interior passenger volume without moonroof – L (cu. ft.)	2718 (96.0)
Interior passenger volume with moonroof – L (cu. ft.)	2670 (94.3)
Cargo capacity with 2nd row upright – S/SV/SL – L (cu. ft.)	564 (19.9) 566 (20.0) with moonroof
Cargo capacity with rear seats folded down – S/SV/SL – L (cu. ft.)	1509 (53.3) 1501 (53.0) with moonroof
Fuel tank – L (Imp. gal.)	55 (12.1)

2019 Fuel Consumption Estimates – L/100 km (MPG)	
City/Highway	
FWD (M/T)	10.1 (28)/8.1 (35)
FWD (CVT)	8.6 (33)/7.2 (39)
AWD (CVT)	9.1 (31)/7.6 (37)
— Actual mileage may vary with driving conditions – use for comparison only.	

Nissan's environmental action plan focuses on several key areas. In addition to increasing production of Zero Emission vehicles like the 100% electric LEAF®, we're improving fuel efficiency across our lineup, and reducing the environmental impact of manufacturing through energy-efficient practices in our plants.



NISSAN QASHQAI®

Isn't it time you were passionate about the vehicle you drive?
Welcome to the 2019 Qashqai.

Follow Nissan Canada on:

